

Legend

- Council Administrative Boundary
- Main River
- Artificial (Undivided)
- Landslide Deposits (Undifferentiated)

BGS Minimum Permeability

- Very High
- High
- Moderate
- Low
- Very Low

NOTES

Drawing Status: **FINAL**

Job Title: **South Essex Surface Water Management Plan**

Drawing Title: **Minimum Permeability Map**

Scale at A3: **1:140,000**

Drawn by	Date	Approved	Date
Ryan Cox	10/05/11	Trevor Muten	11/05/11

Scott Wilson
 Scott House, Alencon Link,
 Basingstoke, Hants, RG21 7PP
 Telephone (01256) 310 200
 www.scottwilson.com

Reproduced from 1:50 000 by permission of Ordnance Survey on behalf of the Controller of Her Majesty's Stationery Office © Crown Copyright 2008. All rights reserved. Reference number [0100031673].
 Digital geological map data reproduced from British Geological Survey (c) 2010

Base Map Details
 Projection: Transvers Mercator
 Scale Factor: 0.999601
 Origin: 2° West, 49° North
 Coordinates: 400000, -100000
 Units: metres
 Datum: OSGB 1936

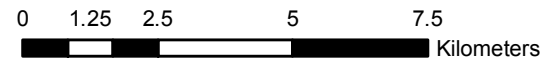
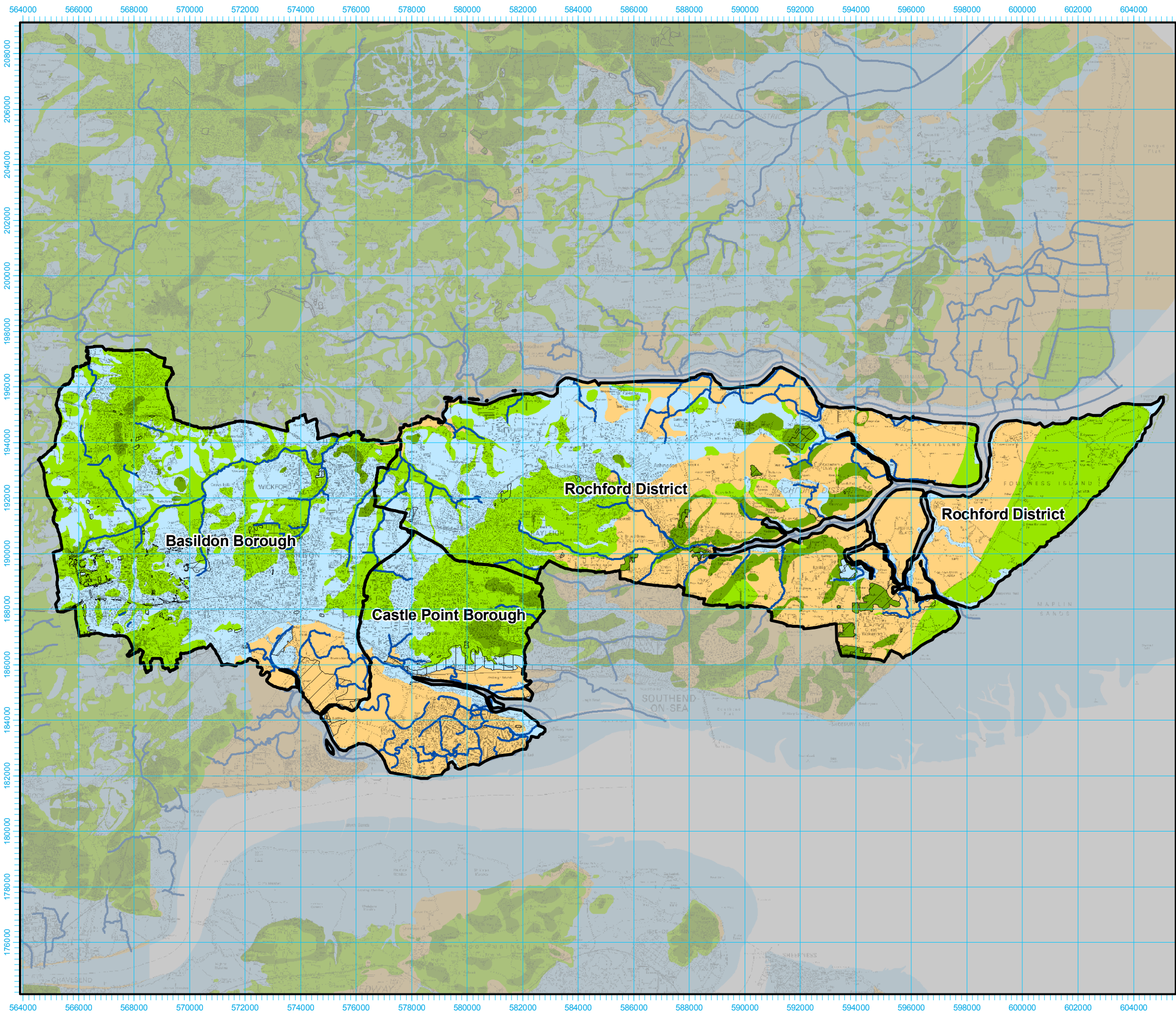


FIGURE 5-1

K:\jobs\132233_South Essex SWMP\700_Technical\711_GIS\01_Layout



Legend

- Council Administrative Boundary
- Main River
- Artificial (Undivided)
- Landslide Deposits (Undifferentiated)

BGS Maximum Permeability

- Very High
- High
- Moderate
- Low

NOTES

Drawing Status: **FINAL**

Job Title: **South Essex Surface Water Management Plan**

Drawing Title: **Maximum Permeability Map**

Scale at A3: **1:140,000**

Drawn by	Date	Approved	Date
Ryan Cox	10/05/11	Trevor Muten	11/05/11

Scott Wilson
 Scott House, Alencon Link,
 Basingstoke, Hants, RG21 7PP
 Telephone (01256) 310 200
 www.scottwilson.com


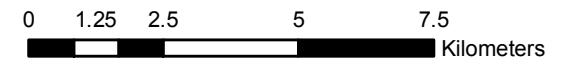



FIGURE 5-2

Reproduced from 1:50 000 by permission of Ordnance Survey on behalf of the Controller of Her Majesty's Stationery Office © Crown Copyright 2008. All rights reserved. Reference number [0100031673].
 Digital geological map data reproduced from British Geological Survey (c) 2010

Base Map Details
 Projection: Transvers Mercator
 Scale Factor: 0.999601
 Origin: 2° West, 49° North
 Coordinates: 400000, -100000
 Units: metres
 Datum: OSGB 1936